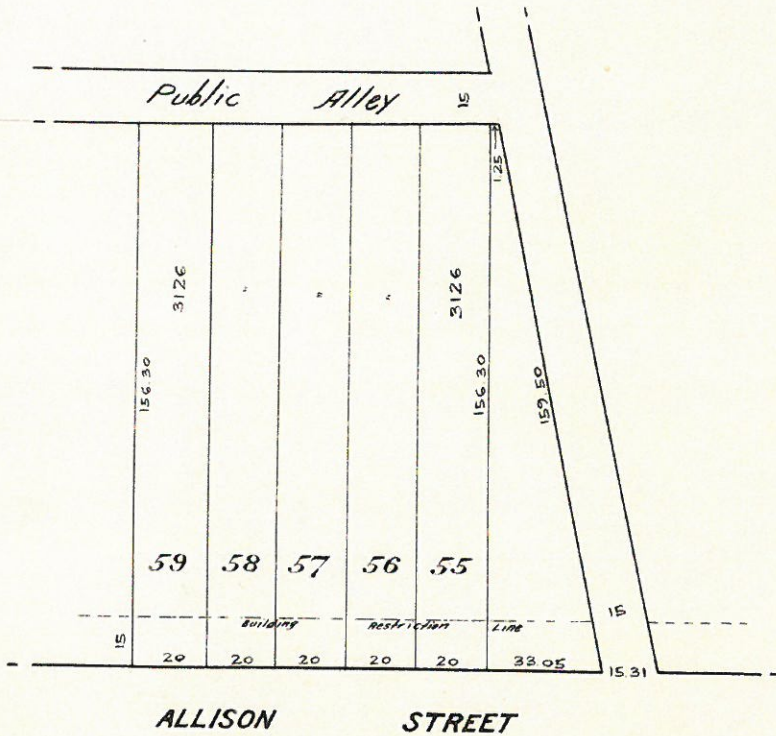


S Q U A R E 2 9 1 8



I hereby subdivide lots 3 to 6 (of subdivision by Esley and Hill, recorded in Book County 21, page 7), Square 2918, into lots 55 to 59, as shown above.

(Signed) Wilmot W. Trew

(Signed) J.S. Gruver (Seal)

Witness:

(Signed) E.B. Shaver

No Trust

I certify that the foregoing plat is correct and agrees with the records of this office, and was received for record 2.00 P.M., February 26th. 1915.

Witness my hand and seal this 26th. day of February 1915.

W.C. Boyer (Seal)
Surveyor, District of Columbia.

*Robert
G. Weaver*

Board of Zoning Adjustment
District of Columbia
CASE NO. 19067
EXHIBIT NO. 51D